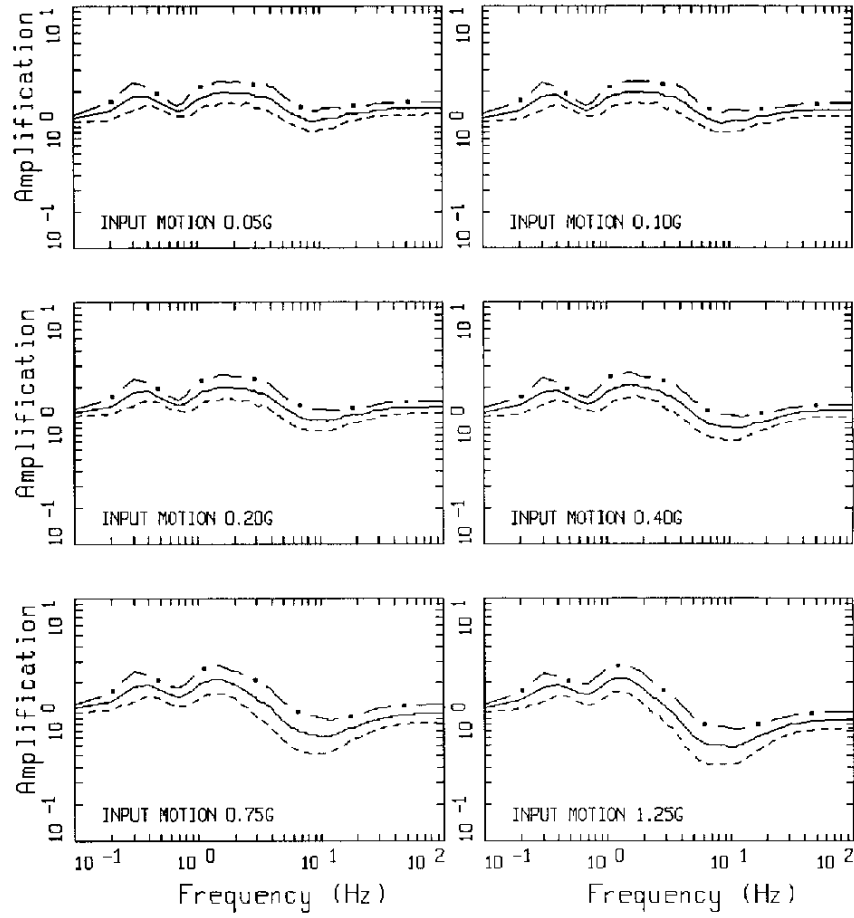
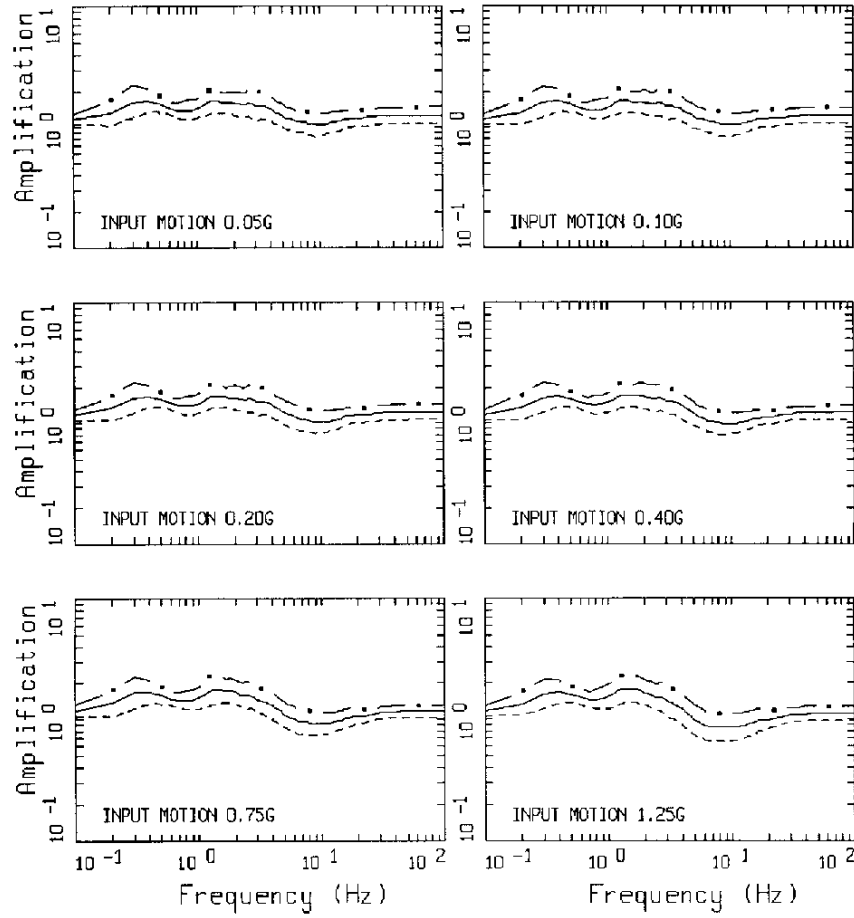


APPENDIX B

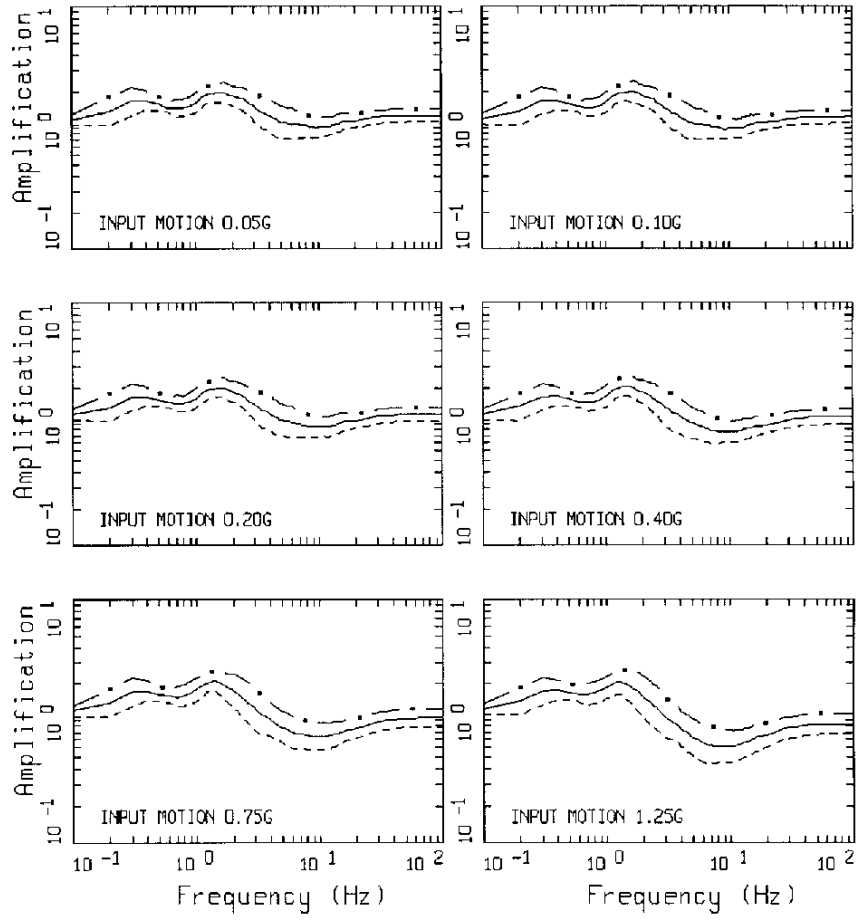
Amplification Factors (5% damped response spectra)
For The Los Angeles Area Based on Surface Geology: T_s ,
Saugus (T_s), QT_s ($Q_o + T_s$), Q_o , and Q_y (Table 1).



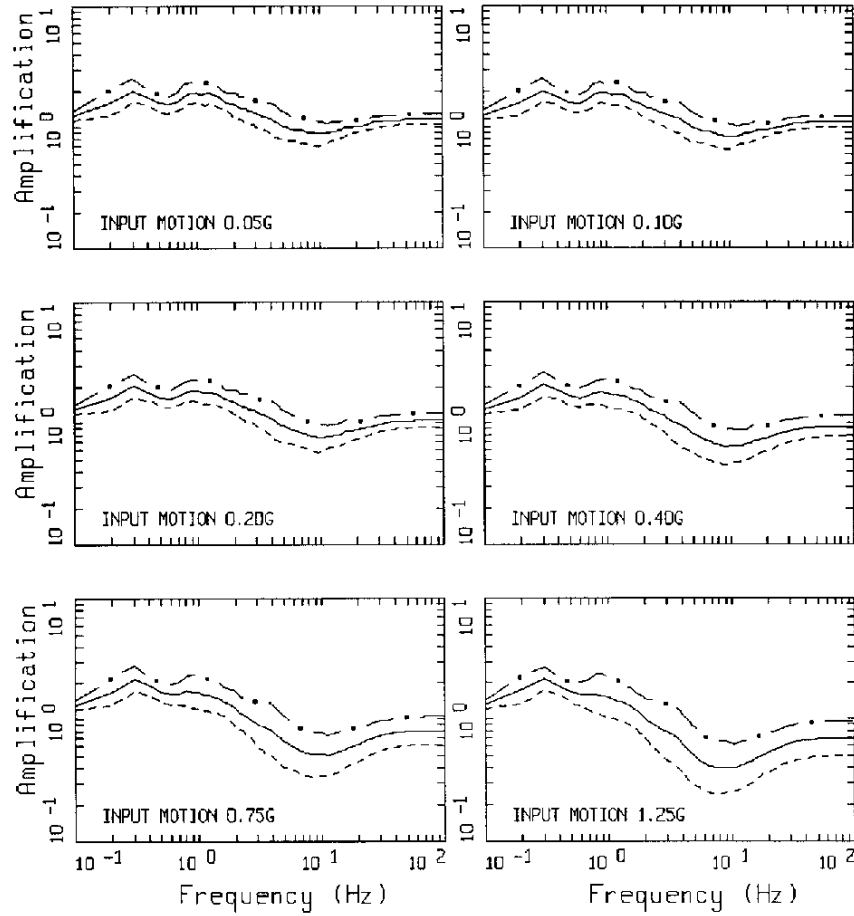
LA AMPLIFICATION
 Ts



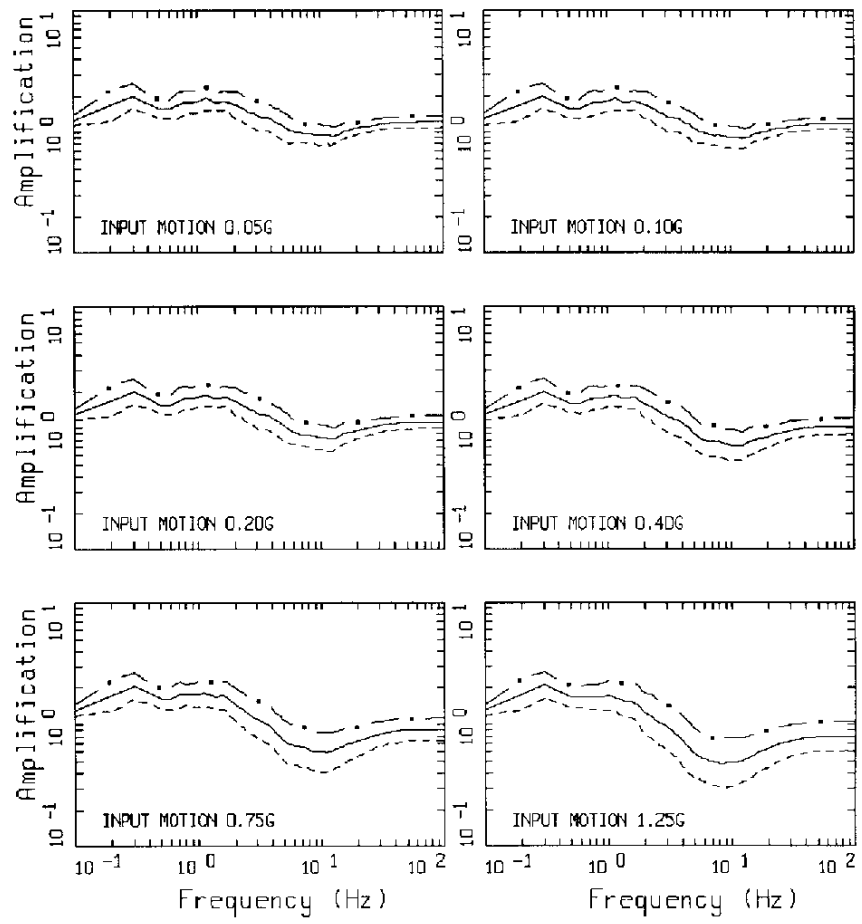
LA AMPLIFICATION
 Saugus (Ts) (30 - 150 ft)



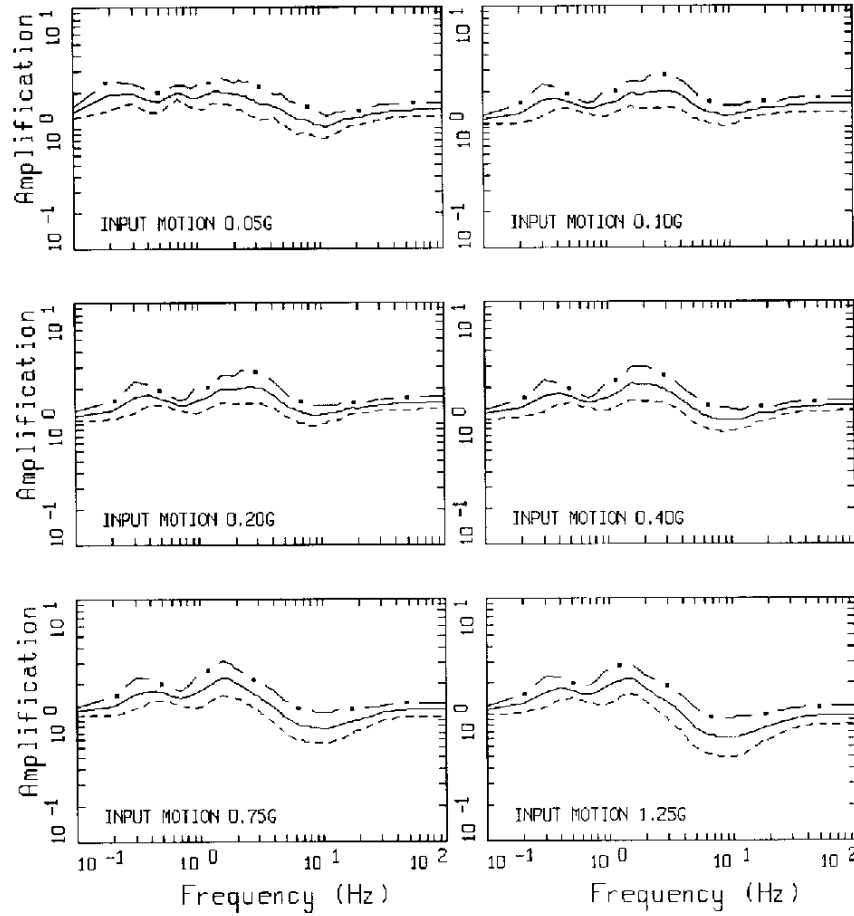
LA AMPLIFICATION
 Saugus (Ts) (150 - 350 ft)



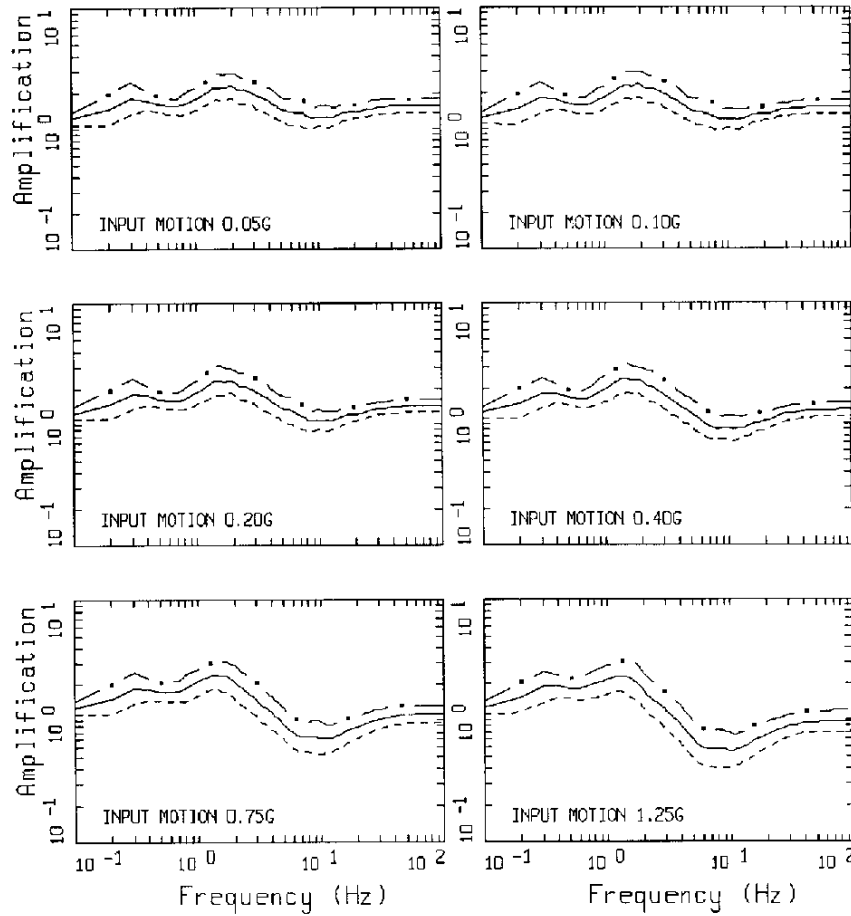
LA AMPLIFICATION
 Saugus (Ts) (350 - 650 ft)



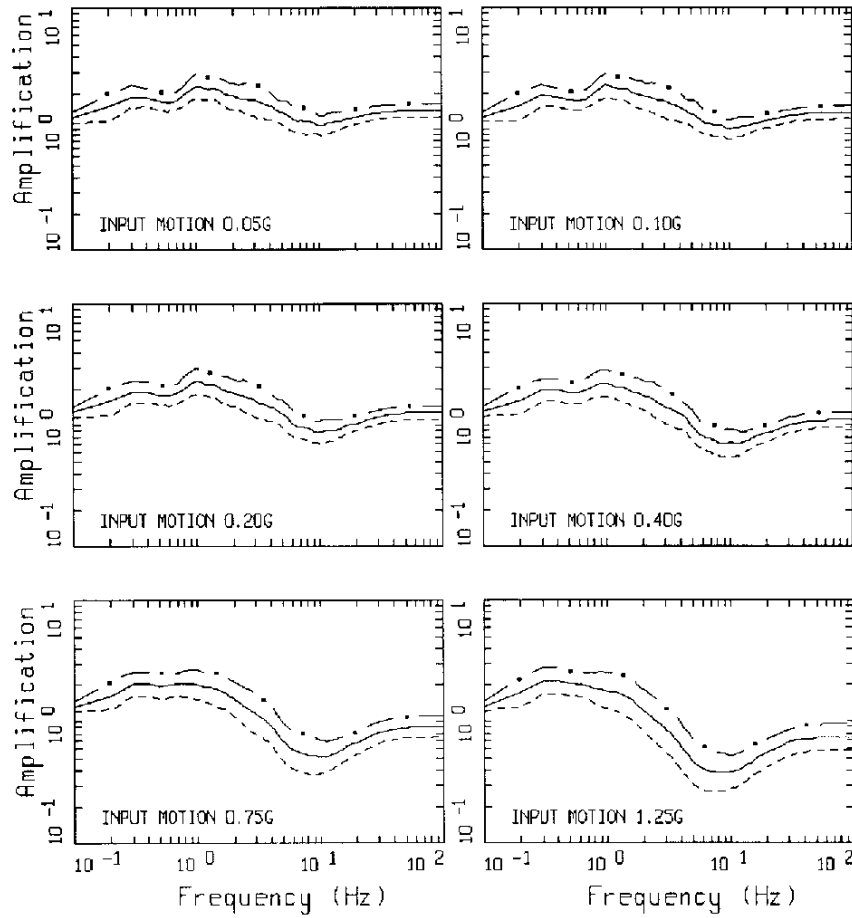
LA AMPLIFICATION
 Saugus (Ts) (30 - 1000 ft)



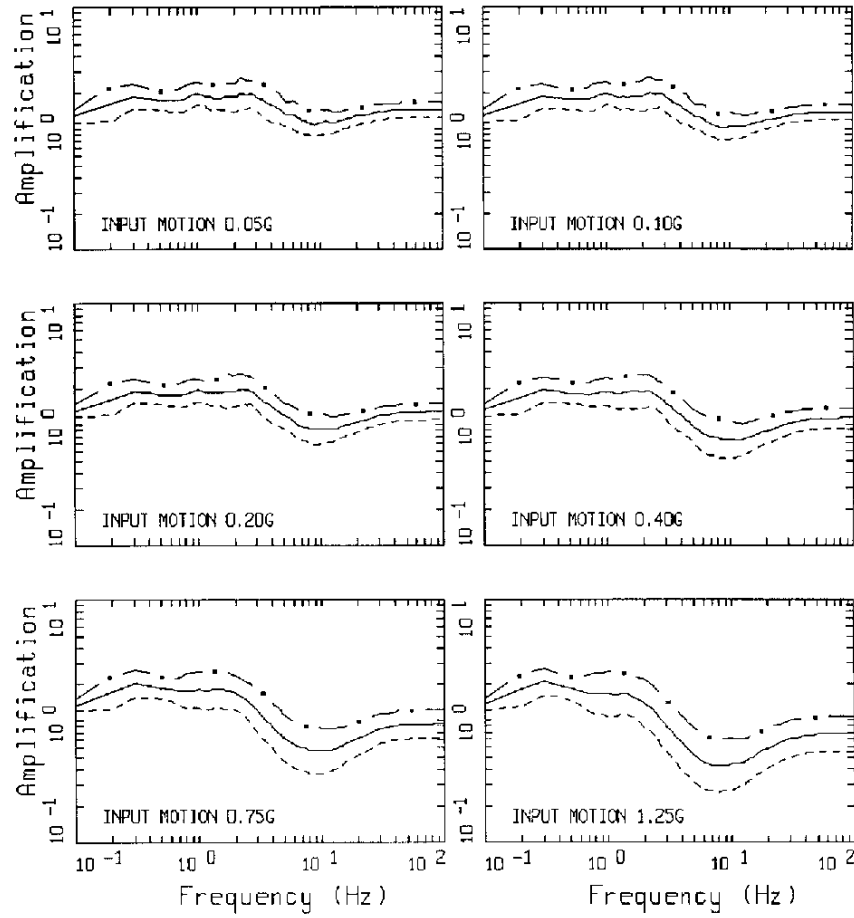
LA AMPLIFICATION
 $Q_0 + T_s$ (30 - 150 ft)



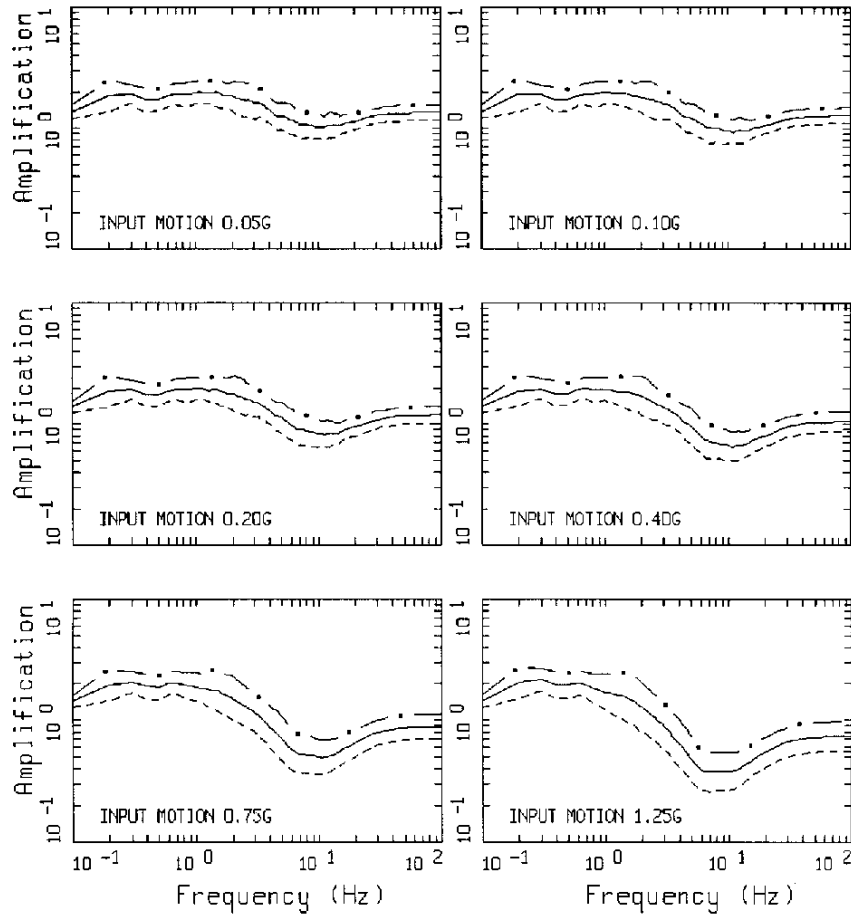
LA AMPLIFICATION
 $Q_0 + T_s$ (150 - 350 ft)



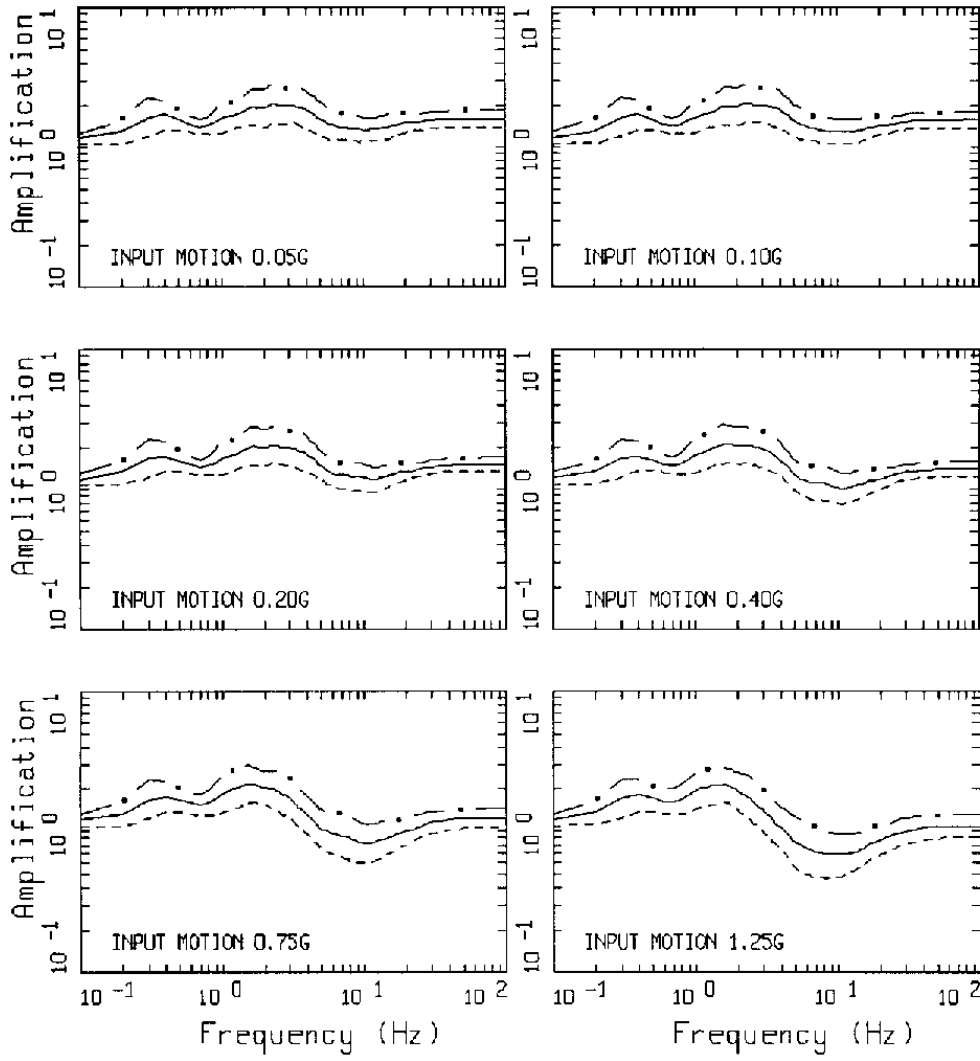
LA AMPLIFICATION
 $Q_0 + T_s$ (350 - 650 ft)



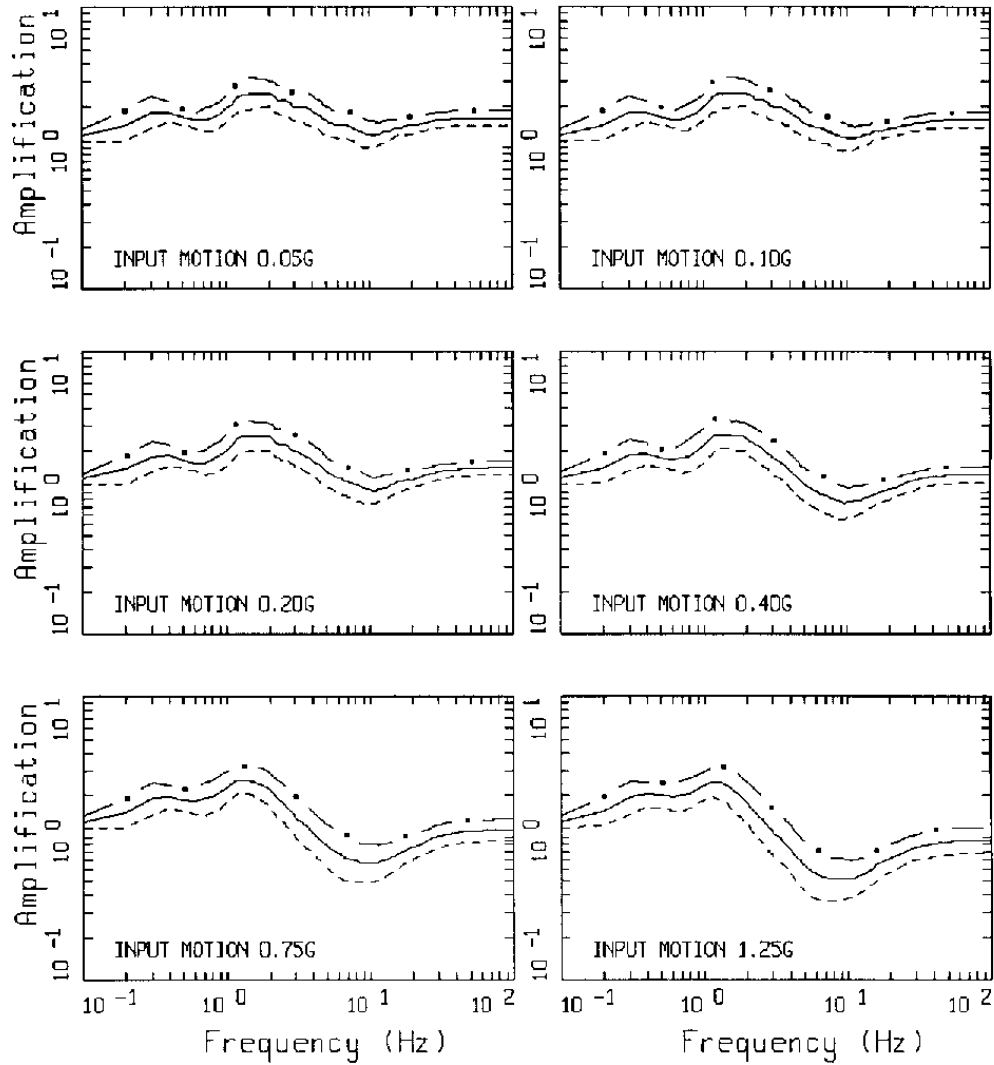
LA AMPLIFICATION
 $Q_0 + T_s$ (30 - 1000 ft)



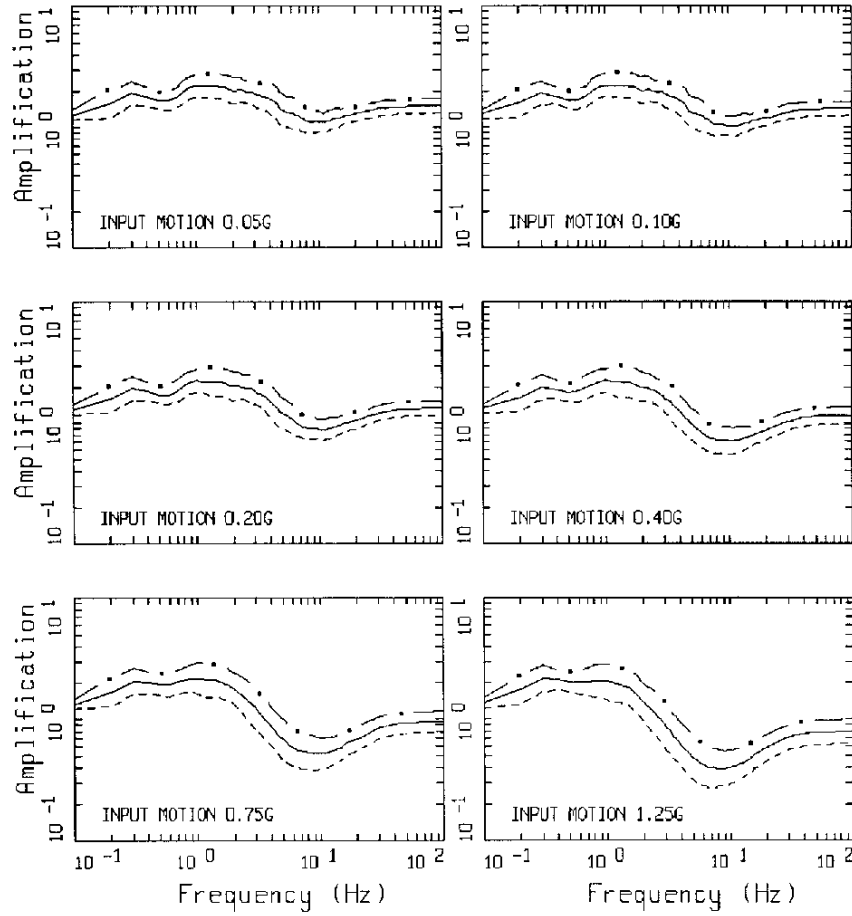
LA AMPLIFICATION
 $Q_0 + T_s$ (500 - 1500 ft)



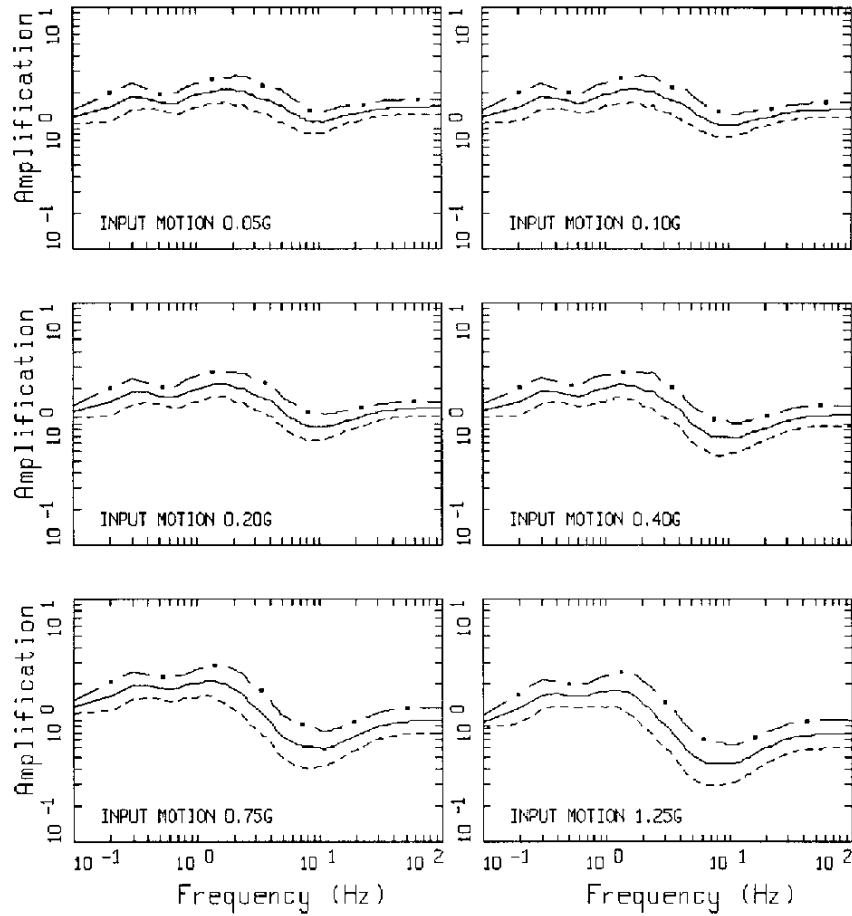
LA AMPLIFICATION
 Q_a (30 - 150 ft)



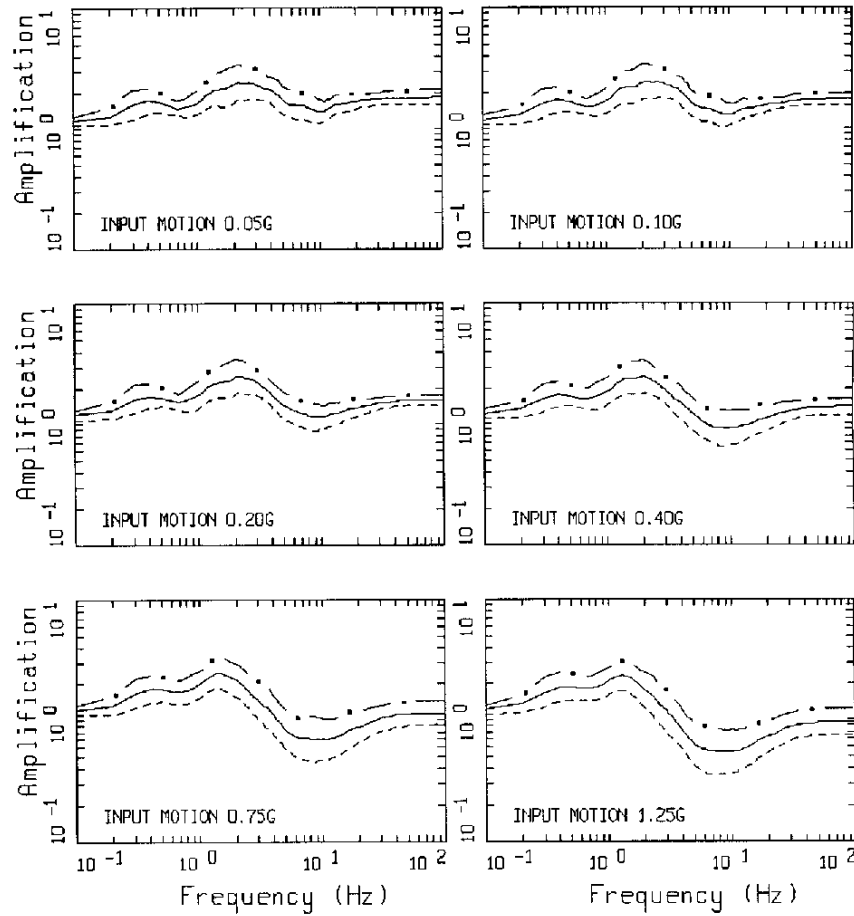
LA AMPLIFICATION
 Q_0 (150 - 350 ft)



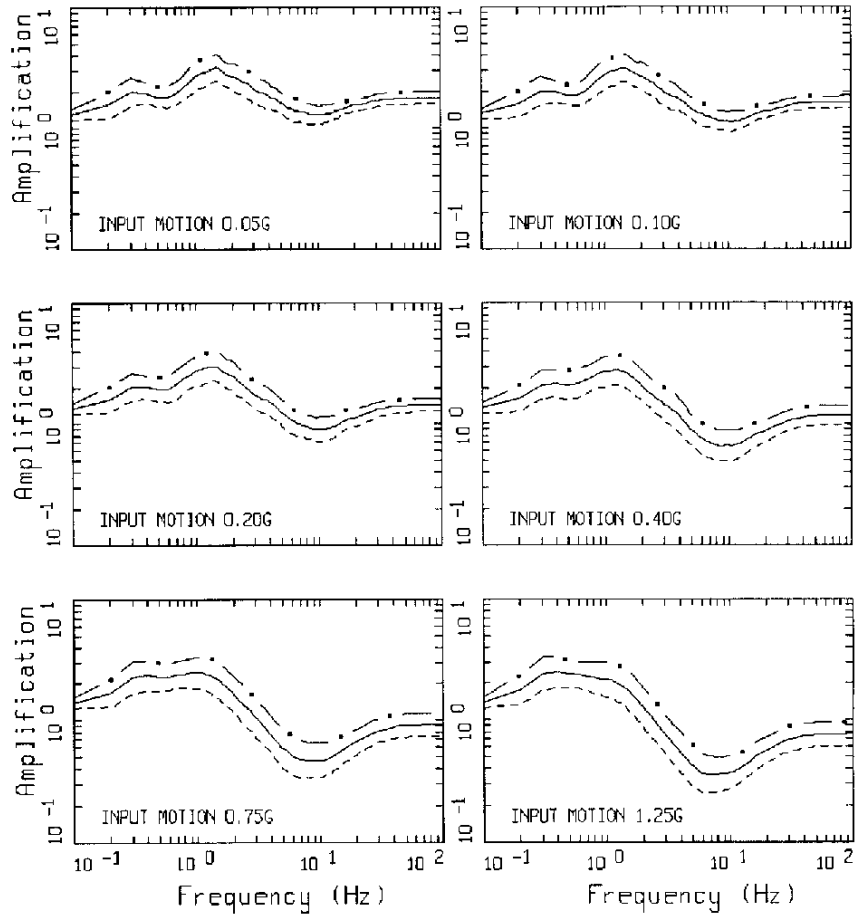
LA AMPLIFICATION
 Q_0 (350 - 650 ft)



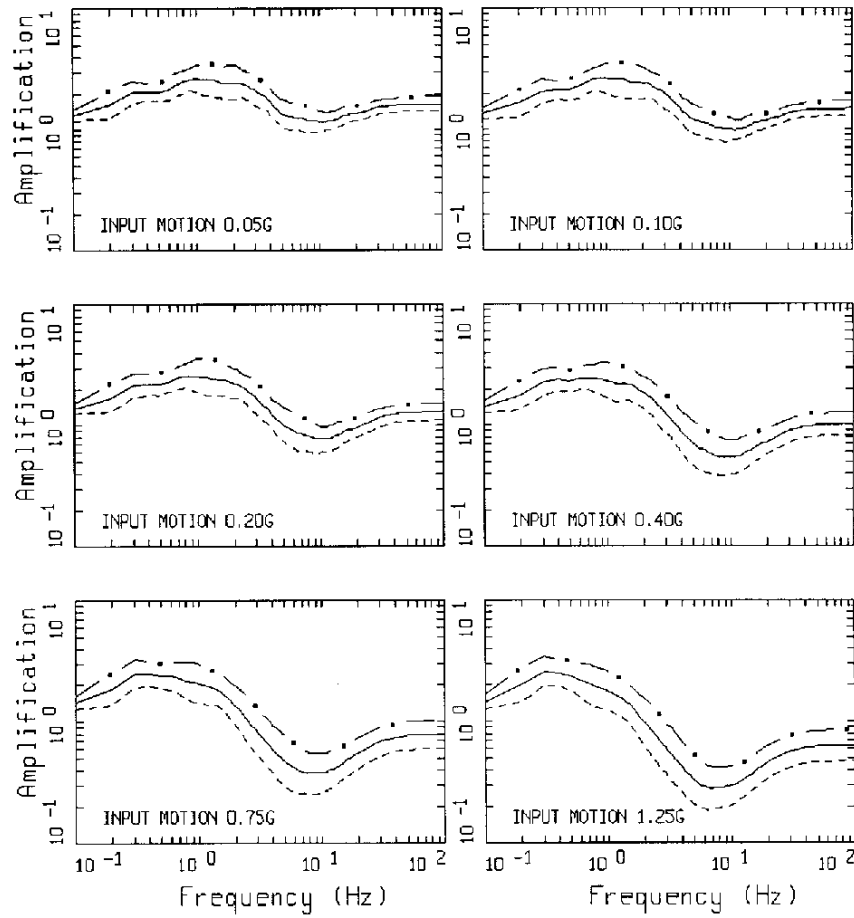
LA AMPLIFICATION
 Q₀ (30 - 1000 ft)



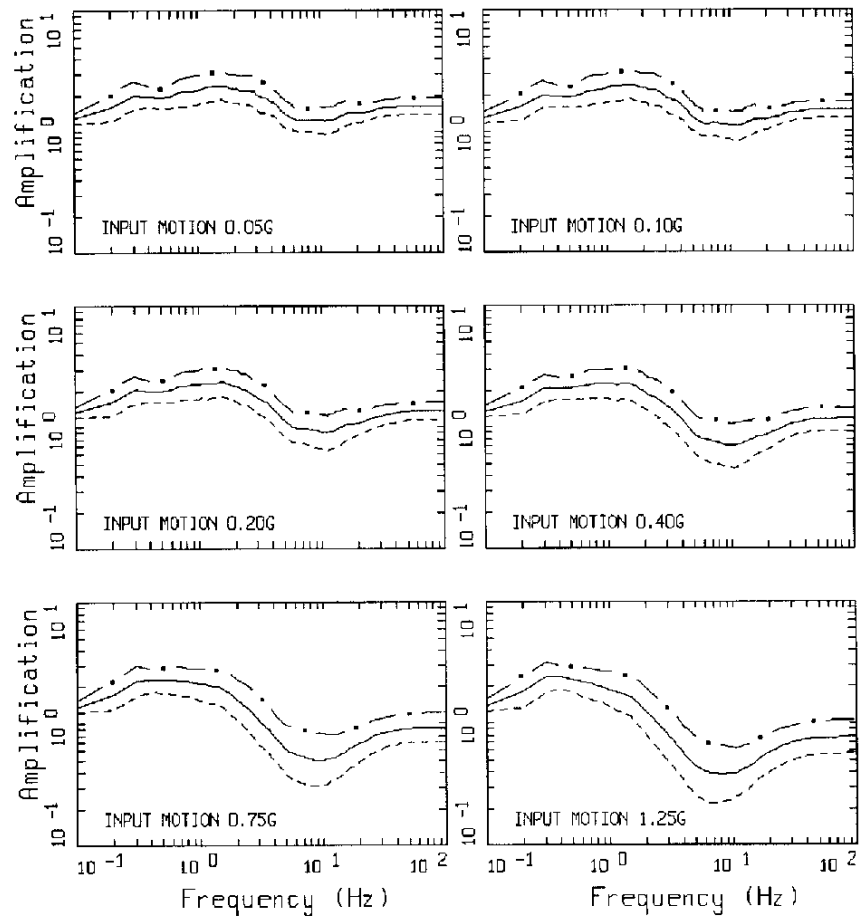
LA AMPLIFICATION
 Q_y (30 - 150 ft)



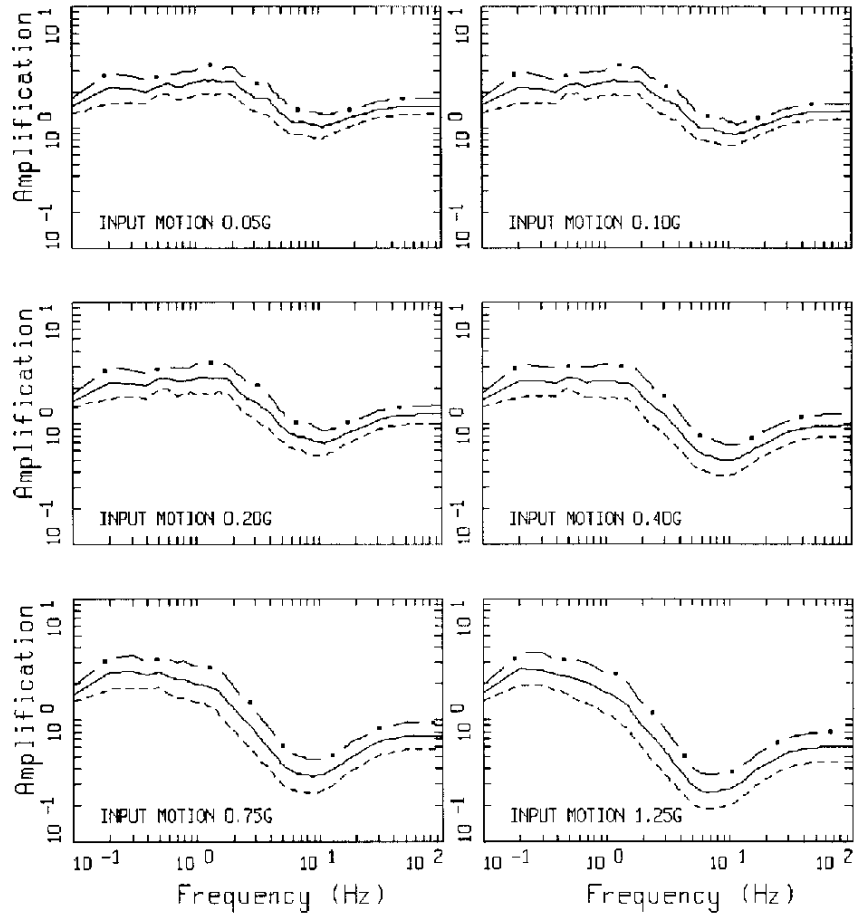
LA AMPLIFICATION
 Qy (150 - 350 ft)



LA AMPLIFICATION
 Q_y (350 - 650 ft)



LA AMPLIFICATION
 Q_y (30 - 1000 ft)



LA AMPLIFICATION
 Q_y (500 - 1500 ft)